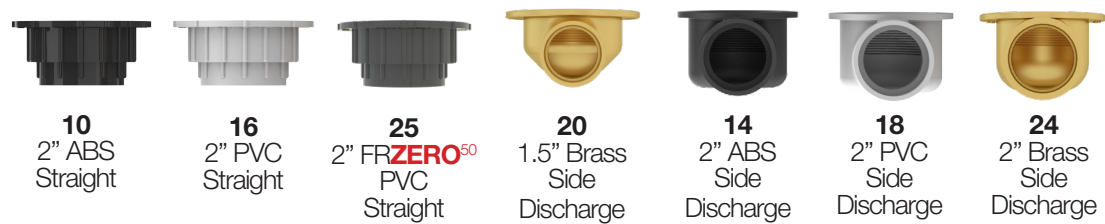
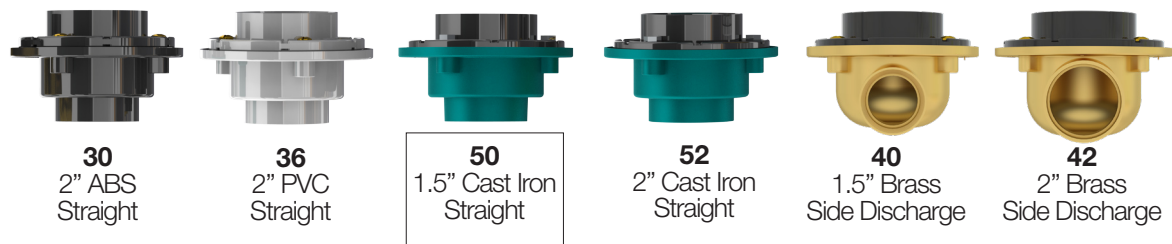


1 Underbody** Suffix

For Molded (preformed) Base (For Top Models 100, 102, 150 & 152 only)



For Tile Base (For Top Models 100, 102, 150, 152, 202, 252)



Underbody** Part # Configurator - BCS.

BCS.

UNDERBODY SUFFIX
(2 CHAR.)

1

Underbody** - List Prices

PART #	DESCRIPTION	List Price
Underbody for Molded (preformed) Bases		
BCS.10	2" ABS Straight for Molded (preformed) Bases	\$8.00
BCS.16	2" PVC Straight*for Molded (preformed) Bases	\$8.00
BCS.25	2" FRZERO ⁵⁰ PVC Straight for Molded (preformed) Bases	\$38.00
BCS.20	1.5" Brass Side Discharge for Molded (preformed) Bases	\$115.00
BCS.14	2" ABS Side Discharge for Molded (preformed) Bases	\$50.00
BCS.18	2" PVC Side Discharge for Molded (preformed) Bases	\$50.00
BCS.24	2" Brass Side Discharge for Molded (preformed) Bases	\$115.00
Underbody for Tile Bases		
BCS.30	2" ABS Straight for Tile Bases.	\$16.00
BCS.36	2" PVC Straight for Tile Bases.	\$16.00
BCS.50	1.5" Cast Iron Straight for Tile Bases.	\$40.00
BCS.52	2" Cast Iron Straight for Tile Bases.	\$40.00
BCS.40	1.5" Brass Side Discharge for Tile Bases.	\$135.00
BCS.42	2" Brass Side Discharge for Tile Bases.	\$135.00
Adaptor		
SD-23A-11-1/2	2" x 3" Adaptor (11-1/2 TPI). Included with all Trim Tops for Tile Bases.	\$5.00

**See previous pages for Trim Tops - Sold Separately

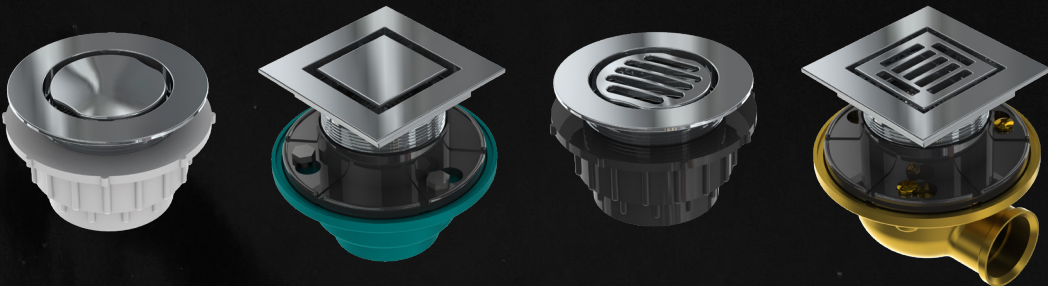
SERENITY™



www.brontecollection.ca

SERENITY™

The complete Shower Drain System



For Molded (preformed) Bases

Featuring solid Brass construction and designed to fit most popular molded preformed Shower Bases.

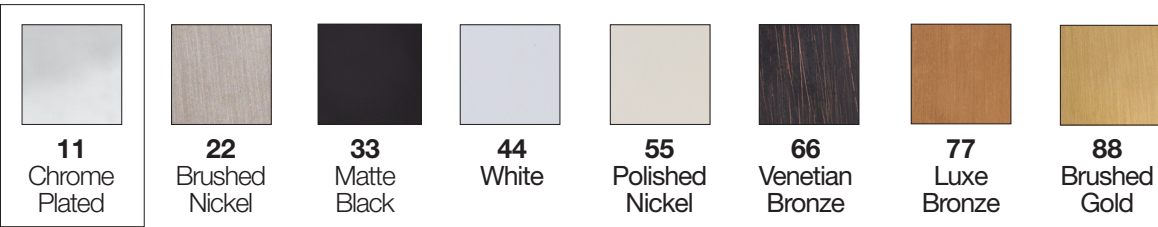
Features:

- 4” Round Top featuring a 3” Drain Outlet
- Slotted or Flat grate designs - Removable for easy cleaning
- Integral/Removable Stainless Steel Hair Catcher supplied with every drain
- Underbody (sold separately) available in ABS, PVC or Brass in Straight and Side Discharge configurations
- All Underbody's and Trim Tops are cCSAus Certified

1 Trim* Top for Molded (preformed) Bases Suffix



2 Finish Suffix



Trim* Part # Configurator - BCS.100.11

BCS.

TRIM TOP SUFFIX
(3 CHAR.)

1

FINISH SUFFIX
(2 CHAR.)

2

Trim* - List Prices

		Finishes - List Price							
STYLE	PART #	11	22	33	44	55	66	77	88
FLAT ROUND	BCS.100.(FINISH SUFFIX)	\$150.00	\$175.00	\$250.00	\$250.00	\$250.00	\$250.00	\$250.00	\$250.00
SLOTTED ROUND	BCS.150.(FINISH SUFFIX)	\$150.00	\$175.00	\$250.00	\$250.00	\$250.00	\$250.00	\$250.00	\$250.00

*See back page for Underbody options - Sold Separately

For Tile Bases

Featuring solid Brass construction and designed for use with Tile Bases.

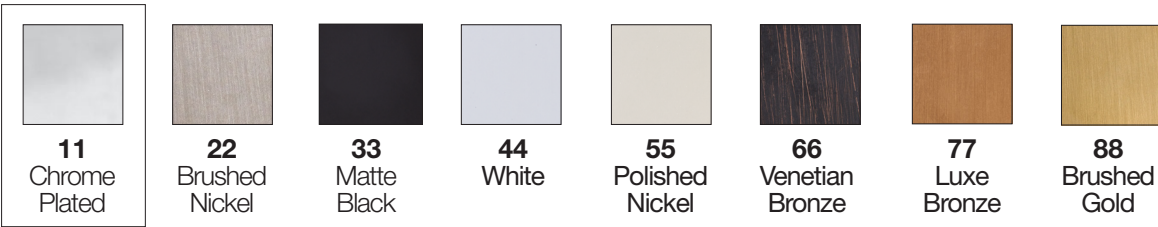
Features:

- 4” x 4” Square or 4” Round Top featuring a 2” Drain Outlet
- Slotted or Flat grate designs - Removable for easy cleaning
- Integral/Removable Stainless Steel Hair Catcher supplied with every drain
- 2” x 3” (11-1/2” TPI) Adaptor supplied with every Trim Top for Tile Bases
- Underbody (sold separately) available in ABS, PVC, Brass or Cast Iron in Straight and Side Discharge configurations
- All Underbody's and Trim Tops are cCSAus Certified

1 Trim* Top for Tile Bases Suffix



2 Finish Suffix



Trim* Part # Configurator - BCS.102.11

BCS.

TRIM TOP SUFFIX
(3 CHAR.)

1

FINISH SUFFIX
(2 CHAR.)

2

Trim* - List Prices

		Finishes - List Price							
STYLE	PART #	11	22	33	44	55	66	77	88
FLAT ROUND	BCS.102.(FINISH SUFFIX)	\$160.00	\$180.00	\$260.00	\$260.00	\$260.00	\$260.00	\$260.00	\$260.00
FLAT SQUARE	BCS.202.(FINISH SUFFIX)	\$160.00	\$180.00	\$260.00	\$260.00	\$260.00	\$260.00	\$260.00	\$260.00
SLOTTED ROUND	BCS.152.(FINISH SUFFIX)	\$160.00	\$180.00	\$260.00	\$260.00	\$260.00	\$260.00	\$260.00	\$260.00
SLOTTED SQUARE	BCS.252.(FINISH SUFFIX)	\$160.00	\$180.00	\$260.00	\$260.00	\$260.00	\$260.00	\$260.00	\$260.00

*See back page for Underbody options - Sold Separately

Split Finish - For Tile Bases

Featuring solid Brass construction and designed for use with Tile Bases.

Features:

- 4” x 4” Square or 4” Round Top in Matte Black (33) featuring a 2” Drain Outlet
- Slotted or Flat grate design - Removable for easy cleaning. Gate available in Chrome Plated (11), Brushed Nickel (22), Luxe Bronze (77) or Brushed Gold (88)
- Integral/Removable Stainless Steel Hair Catcher supplied with every drain
- 2” x 3” (11-1/2” TPI) Adaptor supplied with every Trim Top for Tile Bases
- Underbody (sold separately) available in ABS, PVC, Brass or Cast Iron in Straight and Side Discharge configurations
- All Underbody's and Trim Tops are cCSAus Certified

1 Split Finish Trim* Top+ for Tile Bases Suffix



2 Slotted or Flat Grate Finish Suffix



Trim* Part # Configurator - BCS.102.33.11

BCS.

TRIM TOP SUFFIX
(3 CHAR.)

1

33

TOP IN MATTE BLACK (33) ONLY

GRATE FINISH SUFFIX (2 CHAR.)

2

Dual Finish Trim* - List Prices

		Grate Finishes (Matte Black Trim Top) - List Price			
STYLE	PART #	11	22	77	88
FLAT ROUND	BCS.102.33.(FINISH SUFFIX)	\$260.00	\$260.00	\$260.00	\$260.00
FLAT SQUARE	BCS.202.33.(FINISH SUFFIX)	\$260.00	\$260.00	\$260.00	\$260.00
SLOTTED ROUND	BCS.152.33.(FINISH SUFFIX)	\$260.00	\$260.00	\$260.00	\$260.00
SLOTTED SQUARE	BCS.252.33.(FINISH SUFFIX)	\$260.00	\$260.00	\$260.00	\$260.00

*See back page for Underbody options - Sold Separately

†Shown with Chrome Plated (11) Grate for illustrative purposes. See above for other Grate finish options.