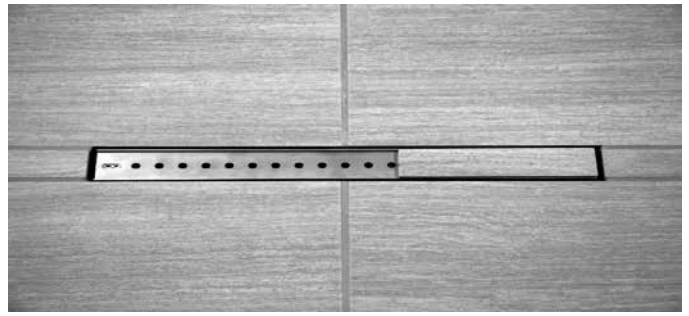


bronte Linear Drain™ Tile Top Strainer Grate Installation Guide

1. PRODUCT

- 1.1 The bronte Linear Drain's Tile Top Strainer Grate is a stainless steel strainer which allows for the installation of tile with thin-set. The strainer grate accommodates a wide variety of tile to create a seamless appearance to any wet area floor.
- 1.2 There are no special tools needed for attachment of the Tile Top Strainer Grate.
- 1.3 This Tile Top Strainer Grate kit contains: the stainless steel strainer grate, strainer grate height adjustment screws, 2 pre-strainers and pre-strainer attachment screws.



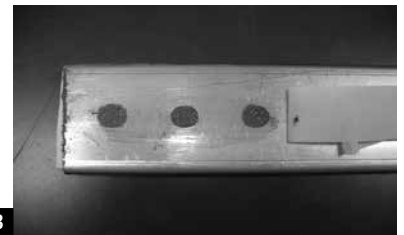
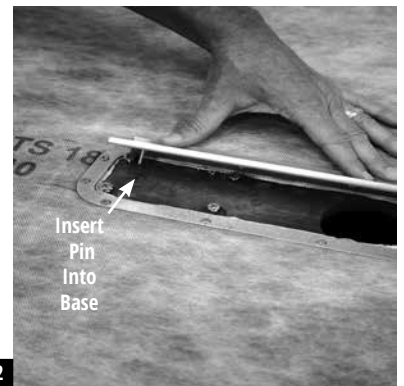
2. PRE-PLANNING

- 2.1 Read these instructions completely before starting installation.
- 2.2 Follow the bronte Linear Drain Installation Instructions and insert the steps below into the installation process.
- 2.3 **This strainer grate is not to be used with the Full Mortar Bed Adapter Kit.** A separate kit is available when the Full Mortar Bed Adapter Kit is used.
- 2.4 The Tile Top Strainer Grate does not have screws to secure it to the base, therefore, no strainer grate attachment screws or height adjustment tool are included. Also, the strainer grate height adjustment screws are 1/4" shorter than stated in the Linear Drain Instruction sheet.
- 2.5 Prior to adhering tile, dry fit tile in installed strainer grate and on floor surrounding the strainer grate. Note the height alignment of floor tile and strainer grate tile. Accommodate any height issues while adhering tile.



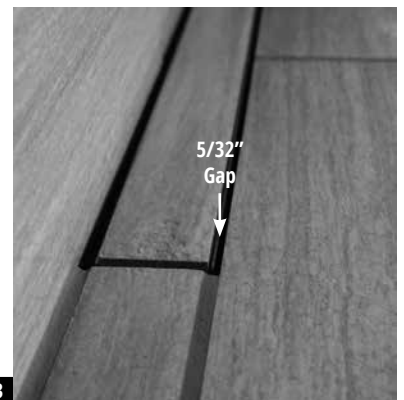
3. INSTALLATION

- 3.1 **Install Height Adjustment Screws Step:**
Install the screws supplied with the Tile Top Strainer Grate (quantity varies based on drain length). Hand tighten each screw (low torque setting on power screwdriver) until each is bottomed out against drain base. Do NOT over tighten.
- 3.2 **Temporarily Attach Strainer Step:**
Attach the Tile Top Strainer Grate by slipping the two pins located on the bottom side of strainer (one on each end) into the two holes located in the drain base. One of the pins slides and the other is fixed.



4. MAINTENANCE - (NOTE TO OWNER)

- 4.1 Lift the Tile Top Strainer Grate from the Drain Base.
- 4.2 Remove any hair or obstructions from the drain.
- 4.3 Replace the Tile Top Strainer Grate by slipping the two pins located on the bottom side of strainer (one on each end) into the two holes located in the drain base. One of the pins is fixed and the other can be slid to match up with the hole in the drain base.



2200 Speers Road
Oakville, ON. L6L 2X8
www.brontecollection.ca

U.S. Patent No. 8,474,068
Patents Pending: Canada & EP Publication No. 2354339
bronte™ is a trademark of Oakville Stamping & Bending Ltd.

